

# **\*IMPORTANT NOTICE\***

**Collection Day:** All roll out carts in your area will be collected every **Thursday**

**Please read the information package attached to this cart in its entirety.**

These carts were delivered to the "Point of Collection". This is where they must be placed in order to be collected by the new automated garbage truck. Please set the containers side by side, at least 3 feet away from each other.

All of your waste must be placed within the new roll cart marked Waste, and all of your recycling must be placed within the roll cart marked Recycling. The lids **must BE ABLE** to close, and **BE** closed in order for us to empty it. **Please note:** your containers will be picked up separately; both containers must be at the curb by 7AM to ensure pick-up. If your cart's are not out by 7 am the driver will not pick them up, you will have to wait until the next collection date to have them dumped. You are responsible for your roll cart if it goes missing or is damaged due to negligence. To receive a new roll cart you will have to pay a \$100.00 deposit. So take good care of your cart(s). **IF THESE CARTS WILL NOT CONTAIN ALL YOUR WASTE OR RECYCLING, contact the Town office at 780-796-3731 to arrange for additional cart(s).**

Please bag or tie all materials before placing them in either container. No waste or recycling materials will be picked up if they are not in the containers.

Do not attach or chain this cart to anything; the new garbage truck lifts these carts 8 feet in the air to dump them... anything attached to these carts will also go up 8 feet!

**Please direct any questions or concerns to Stand-Stone Waste Services Ltd. 1-866-967-4450**

## Fully Automated Program, **PLEASE READ**

Standstone Enviro Waste Services Ltd. is advancing to a fully automated collection system. Drivers stay in the truck and use a mechanical arm to pick up and empty the carts: drivers will NOT get out and collect any items outside of the carts or move any items away from the carts, or move your cart if it has been placed in a manner in which it cannot be dumped.

- Put your solid waste in disposable bags or boxes, tied or taped together before placing it in your cart. This keeps items from blowing away when the cart is emptied.
- Do not overfill your cart, the lid must close and be closed to dump it.
- Place the cart so that the short bar on the front where the serial number is located faces the street, and the handle is towards your house, and the cart is on a level surface, prior to pick-up; cart cannot be sideways or backwards.
- Avoid placing the cart near low hanging tree branches or overhead wires.
- Place the cart at least 2 meters away from permanent structures such as mail boxes, walls, lamp & utility posts, and vehicles.
  
- No items can be within 2 meters of your cart, or the truck's grab arm cannot grab the cart, or may do severe damage to anything within that radius.

Nothing can be between the cart and the street.



**DO** place cart out past parked vehicles and at least 2 meters away from any objects.



**DO** place carts in gutter, with handle facing your house.



**DO NOT** over fill carts. Lids must be closed



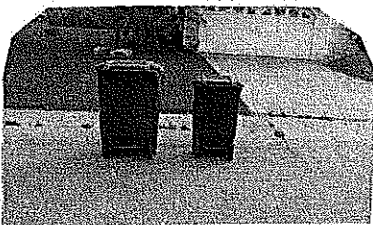
**DO NOT** place anything up against carts



**DO NOT** place carts too far away from street. In the gutter is ideal



**DO NOT** place carts sideways



**DO NOT** place carts backwards



**PERFECT!!**

## Roll-out Cart Recycle Program

Please have your **Recycle Roll-out Cart** (with the blue lid or sticker) out for pick-up by 7AM. Set this cart approximately 3 feet from your **Waste Roll-out Carts**.

Acceptable materials as follows; **please secure all materials by bagging or tying so nothing will fly away in a wind while dumping:**

- Flattened cardboard – **Flattened** and placed inside CART WITH THE BLUE LID
- Cereal & food boxes – **Flattened** & placed in CART WITH THE BLUE LID
- **Flattened** Boxboard (Shoe boxes, etc.) – **Flattened** & placed in CART WITH THE BLUE LID
- Newsprint and Heavy Paper – to be placed in CART WITH THE BLUE LID
- Computer & writing paper – to be placed in CART WITH THE BLUE LID
- Low grade paper (cardboard egg cartons, etc.) – to be placed in CART WITH THE BLUE LID
- Magazines & Glossy Flyers – to be placed in CART WITH THE BLUE LID
- Tins – rinsed with labels removed and lids tucked inside and placed in CART WITH THE BLUE LID
- Plastic Milk Jugs and waxed cardboard milk containers – lids removed, rinsed and flattened and placed in CART WITH THE BLUE LID
- Beverage bottles, cans and juice boxes – lids removed and placed in CART WITH THE BLUE LID
- Recyclable plastic containers – to be placed in CART WITH THE BLUE LID  
**NO PLASTIC OIL JUGS, TOYS, VINYL SIDING, STYROFOAM, etc. If these items are found in your cart it will not be picked up.**
- Clear Glass Jars – lids removed and rinsed and placed in CART WITH THE BLUE LID

**If you have any questions, please call Stand-Stone Waste Services Ltd at**

**1-866-967-4450**